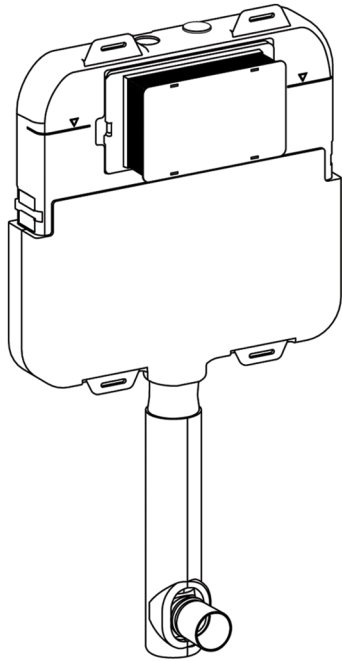


INWALL CISTERN **STO-C100**



Slim in-wall cistern

Suits floor mount pan and standard wall installation Type A

This in-wall cistern is part of the Seima InWall toilet system. The cistern is activated through a premium pneumatic system connected to the flush buttons.

- Hidden slim cistern to suit floor mount pan
- Suitable for front access through flush plate
- Fully insulated by anti-condensation foam to prevent moisture escape
- Powder coated galvanised steel frame for durability
- Easy to install and service
- Innovative design allows the cistern to be serviced through the flush plate

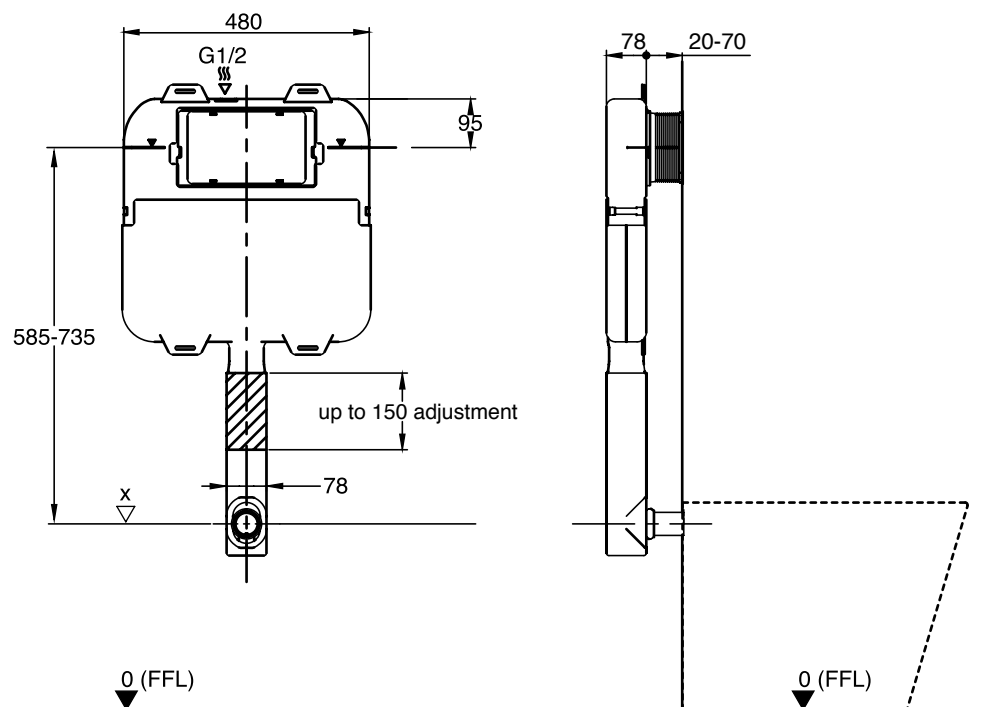
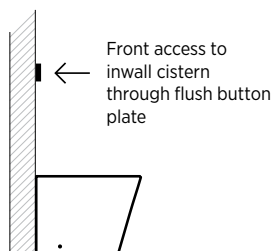
ORDER CODE	STO-C100 (Slim in-wall cistern)
ACCESS	Front access — suits in-wall Installation Type A (see below).
WELS	4 star rating 4.5/3 litre water saving flush (Reg 04737).
PAN	This cistern suits a floor mount pan.
BUTTONS	This cistern is compatible with the full range of Seima flush buttons.
INSTALLATION	Refer to installation instructions for details.

A

INSTALLATION TYPE A

Cistern code: **STO-C100**

Floor mount pan + Slim cistern



SEIMA

bathroom | kitchen | laundry

seima.com.au

Please note

- Installation shall be in accordance with AS/NZS3500.
- All measurements are in millimetres. Height dimensions are to base of pan. Make allowance for bedding.
- Bedding: Fix pan to floor using a sand cement mixture of 3:1 to a depth of 60mm. Do not use lime or fast-drying cement.
- Bracket fixing: The pan should be bedded with an acetic cured silicone sealant and fixed with the brackets supplied.
- Dimensions are nominal and subject to normal ceramic manufacturing variations. Specifications may vary without notice as part of our continuous improvement practices.
- Specifications may vary without notice as part of our continuous improvement practices.
- Clean with a damp cloth. Do not use abrasive cleaners, liquids or pastes.

DS-STO-C100 / v 2.0